

Quality
is the
Best Policy





ABOUT US

Established in 2004, RAJ ENGINEERS, under the brand name KVF, has been a trusted manufacturer and supplier of high-quality industrial valves for over 20 years. As an ISO 9001:2015 registered company, we are committed to maintaining the highest standards of quality, ensuring that our products meet industry specifications and international benchmarks. We offer a wide range of ball valves, gate valves, globe valves, check valves, and butterfly valves, designed for efficient and reliable performance in industries such as oil & gas, petrochemicals, water treatment, power plants, and manufacturing. With two decades of experience, RAJ ENGINEERS has built a reputation for excellence, reliability, and customer satisfaction. We prioritize timely delivery, competitive pricing, and exceptional technical support, making us a preferred partner for industries requiring robust and efficient flow control solutions.

PRODUCT RANGE

- ◆ Pipeline and Process Ball Valves
- ◆ Gate Valves
- ◆ Globe Valves
- ◆ Check Valves
- ◆ Customised Solution

VISION

To become the trusted valves company in the world.

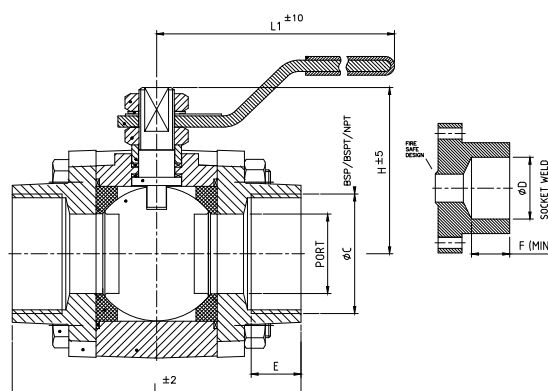
If you'd wish for tomorrow's flow control solution, get in touch with us today.

MISSION

Our mission is to be our customers' preferred partner for Flow control solutions. With a heritage of long-term relationships, we work in collaboration with our customers. We listen closely to them, to understand their needs, not only in the near future but decades from now.

BALL VALVE

THREE-PIECE BALL VALVES - REDUCE BORE ASME CLASS - 800 & 1500



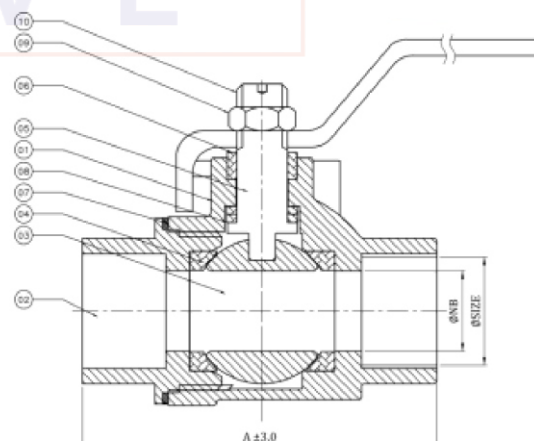
Standards : ISO 17292

Range : 1/4" to 2" (8 mm to 50 mm)
Class 800 to 1500

Materials : A105, LF2, F304/ F304L,
F316/ F316L

SIZE		PORT	L	H	L1	ØC	E	ØD Min.	ØD Max.	F(Min.)
MM	INCH									
15	1/2"	9.5	72	42	130	1/2"	14	21.72	22.2	9.8
20	3/4"	12.7	76	50	145	3/4"	14.5	27.2	27.4	13
25	1"	18	92	55	145	1"	17.5	33.9	34.1	13
32	1.1/4"	24	103	75	218	1.1/4"	18.5	42.7	42.9	13
40	1.1/2"	32	115	80	218	1.1/2"	19	48.8	49.0	16
50	2"	37	125	90	218	2"	19	60.8	61.0	16

SINGLE-PIECE BALL VALVES - FULL BORE CLASS - 150



Standards : ISO 17292

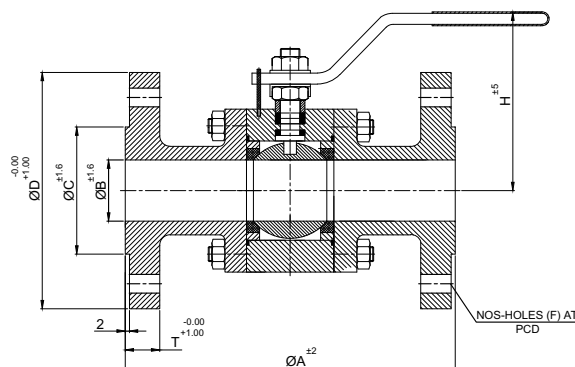
Range : 1/2" to 2"
(15mm to 50mm)
Class 150

Materials : IC CF8, CF8M

SIZE	NB	A	H	Socket Weld Ends		Scr. ENDS	
				Y		E(Min)	G
				Max.	Min.		
15	12.5	63	41	22.2	21.7	9.6	1/2"
20	19	68	49	27.5	27	12.7	3/4"
25	25	77	57.5	34.3	33.8	12.7	1"
40	38	96	77	49.1	48.6	12.7	1-1/2"
50	49	106	85.5	61.62	61.1	15.7	2"

BALL VALVE

THREE-PIECE BALL VALVES - FULL BORE ASME CLASS - 150 & 300



Standards : ISO 17292

Range : 1/2" to 2"

(15mm to 50mm)

Class 150 to 300

Materials : A105, WCB Gr. 216

TECHNICAL DATA FOR 150 CLASS 3PC BV

SIZE		A	ØB	ØC	ØD	T	PCD	F	H
MM	INCH								
15	1/2"	108	12.5	35.0	90.0	8.0	60.3	4xØ16	65.0
20	3/4"	118	19.0	43.0	100	10.0	70.0	4xØ16	65.0
25	1"	127	25.0	51.0	110	11.6	79.4	4xØ16	75.0
40	1.1/2"	165	38.0	73.0	125	14.7	98.4	4xØ16	90.0
50	2"	178	50.0	92.0	150	16.3	120.7	4xØ19	105

FEATURES & BENEFITS

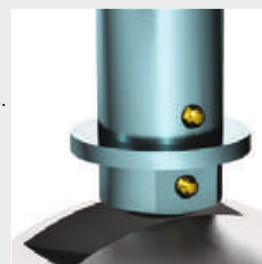
Fire Safe Feature

An integral metal lip in the body and the configuration of the soft seat are designed to prevent the softening downstream seat from being forced into the port in the event of a fire. When the seat is totally sublimated in a fire, the ball moves and rests against the lip, forming a metal-to-metal seat, thus ensuring leak-tightness. End connectors or inserts have spigot ends to ensure concentricity and correct alignment of the ball.



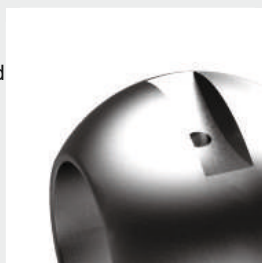
Antistatic Feature

Static electricity builds up inside a valve when the ball rubs against non-metallic seats. This is a fire hazard, especially in flammable fluid pipelines. Our Ball Valves have inbuilt antistatic mechanisms to provide electrical continuity. In valves of smaller sizes, electrical continuity is achieved by using Carbon-filled PTFE thrust seal and graphite stem packing's.



Cavity Pressure Relief Mechanism

A slight increase in temperature of fluid entrapped in ball cavity can cause rapid increase of pressure and damage the ball and seats. To prevent this, Ball Valves are equipped with automatic cavity relief mechanisms. When the valve is in open position, a hole provided on the ball connects the body cavity to the ball port and thereby ensure that cavity pressure does not build up. In the closed condition, when the cavity pressure rises above a designated level, the seat lip defects to relieve pressure to the upstream side.



On-line Service

Three-piece Ball Valves are designed for easy on-line service. To access the valve internals, remove three connector bolts and swing the body out using the fourth bolts as a pivot.



GATE VALVE

GATE VALVES - FORGED ASME CLASS - 800, 1500 & 2500

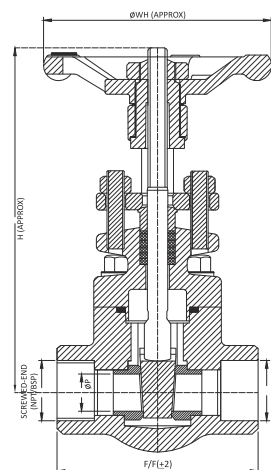
Standards : API 602

Range : 1/2" to 2"

(15mm to 50mm)

Class 800, 1500 & 2500

Materials : A105, F304L,
F316L, LF2



CLASS-800#						
SIZES	F/F	ØP	H-O	H-C	ØWH	WT
15 mm	87	9.5	152	130	86	1.6 k.g.
20 mm	92	12.7	158	133	86	1.9 k.g.
25 mm	106	17.5	189	155	116	3.1 k.g.
32 mm	127	23.8	239	200	150	6.3 k.g.
40 mm	127	28.6	239	200	150	6.1 k.g.
50 mm	142	36.5	288	235	150	9.8 k.g.

CLASS-1500#						
SIZES	F/F	ØP	H-O	H-C	ØWH	WT
15 mm	92	9.5	158	133	86	2.2 k.g.
20 mm	106	12.7	189	155	116	3.6 k.g.
25 mm	127	15.9	239	200	150	7.3 k.g.
32 mm	142	22.2	288	235	150	7.0 k.g.
40 mm	142	27.0	288	235	150	11.3 k.g.

CLASS-2500#						
SIZES	F/F	ØP	H-O	H-C	ØWH	WT
15 mm	106	7.0	186	155	116	4.1 k.g.
20 mm	127	12.5	239	200	150	8.4 k.g.
25 mm	142	15.5	288	235	150	13.0 k.g.

GATE VALVES - FORGED FLANGED END ASME CLASS - 150, 300 & 600

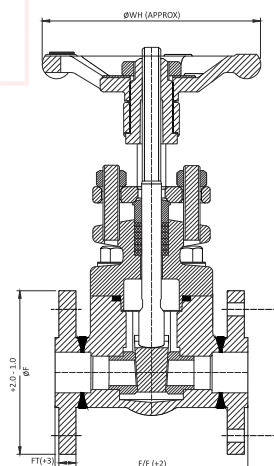
Standards : API 602

Range : 1/2" to 2"

(15mm to 50mm)

Class 150, 300 & 600

Materials : A105, F304L, F316L, LF2



CLASS-150#					
SIZES	F/F	ØF	FT	ØW	WT
15 mm	108	90	9.6	60.3	2.6 kg
20 mm	117	100	11.2	69.9	3.5 kg
25 mm	127	110	12.7	79.4	5.1 kg
32 mm	140	115	14.3	88.9	8.7 kg
40 mm	165	125	15.9	98.4	9.3 kg
50 mm	178	150	17.5	120.7	15.0 kg

CLASS-300#					
SIZES	F/F	ØF	FT	ØW	WT
15 mm	140	95	12.7	66.7	3.2 kg
20 mm	152	115	14.3	82.6	4.7 kg
25 mm	165	125	15.9	88.9	6.5 kg
32 mm	178	135	17.5	98.4	10.5 kg
40 mm	190	155	19.1	114.3	12.1 kg
50 mm	216	165	20.7	127	17.2 kg

CLASS-600#					
SIZES	F/F	ØF	FT	ØW	WT
15 mm	165	95	14.3	66.7	3.6 kg
20 mm	190	115	15.9	82.6	5.1 kg
25 mm	216	125	17.5	88.9	7.3 kg
32 mm	229	135	20.7	98.4	11.5 kg
40 mm	241	155	22.3	114.3	13.7 kg
50 mm	292	165	25.4	127	20.0 kg

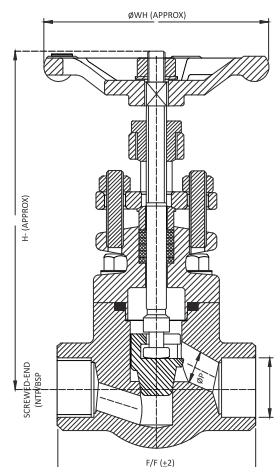
GLOBE VALVES

GLOBE VALVES - FORGED ASME CLASS - 800, 1500 & 2500

Standards : ISO 15761

Range : 1/2" to 2"
(15mm to 50mm)
Class 800, 1500 & 2500

Materials : A105, F304L,
F316L, LF2



CLASS-800#						
SIZES	F/F	ØP	H-O	H-C	ØWH	WT
15 mm	87	9.0	153	147	86	1.6 kg
20 mm	92	12.0	158	149	86	1.9 kg
25 mm	106	17.0	194	182	116	3.0 kg
32 mm	127	23.0	222	208	150	6.5 kg
40 mm	127	25.0	222	208	150	6.3 kg
50 mm	142	29.0	263	245	150	10.1 kg

CLASS-1500#						
SIZES	F/F	ØP	H-O	H-C	ØWH	WT
15 mm	92	8.0	158	149	86	2.2kg
20 mm	106	9.0	194	182	116	3.5kg
25 mm	127	14.0	222	208	150	7.5kg
32 mm	142	20.0	263	245	150	7.3kg
40 mm	142	25.0	263	245	150	11.6kg

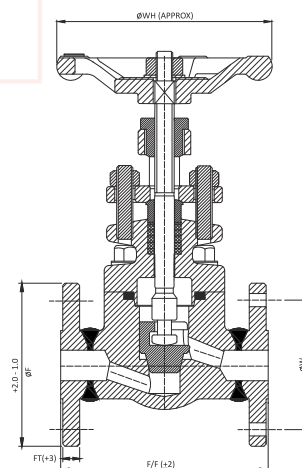
CLASS-2500#						
SIZES	F/F	ØP	H-O	H-C	ØWH	WT
15 mm	106	7.0	194	182	116	4.0kg
20 mm	127	8.0	222	208	150	8.6kg
25 mm	142	12.0	263	245	150	13.3kg

GLOBE VALVES - FORGED FLANGED END ASME CLASS - 150, 300 & 600

Standards : ISO 15761

Range : 1/2" to 2"
(15mm to 50mm)
Class 150, 300 & 600

Materials : A105, F304L, F316L, LF2



CLASS-150#					
SIZES	F/F	ØF	FT	ØW	WT
15 mm	108	90	9.6	60.3	2.6 kg
20 mm	117	100	11.2	69.9	3.5 kg
25 mm	127	110	12.7	79.4	5.1 kg
32 mm	140	115	14.3	88.9	8.9 kg
40 mm	165	125	15.9	98.4	9.5 kg
50 mm	203	150	17.5	120.7	15.3 kg

CLASS-300#					
SIZES	F/F	ØF	FT	ØW	WT
15 mm	152	95	12.7	66.7	3.4 kg
20 mm	178	115	14.3	82.6	4.7 kg
25 mm	203	125	15.9	88.9	6.8 kg
32 mm	216	135	17.5	98.4	10.9 kg
40 mm	229	155	19.1	114.3	12.5 kg
50 mm	267	165	20.7	127	17.9 kg

CLASS-600#					
SIZES	F/F	ØF	FT	ØW	WT
15 mm	165	95	14.3	66.7	3.6kg
20 mm	190	115	15.9	82.6	5.1kg
25 mm	216	125	17.5	88.9	7.2kg
32 mm	229	135	20.7	98.4	11.7kg
40 mm	241	155	22.3	114.3	13.5kg
50 mm	292	165	25.4	127	19.9kg

CHECK VALVES

CHECK VALVES - FORGED ASME CLASS - 800, 1500 & 2500

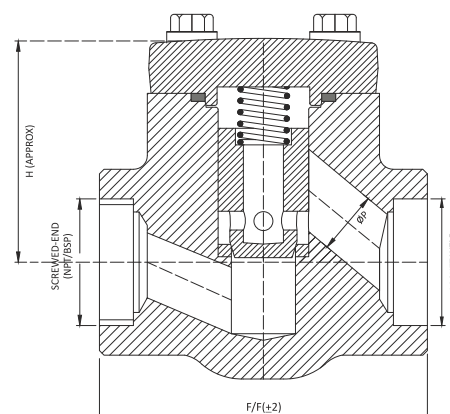
Standards : ISO 15761

Range : 1/2" to 2"

(15mm to 50mm)

Class 800, 1500 & 2500

Materials : A105, F304L, F316L, LF2



CLASS-800#				
SIZES	F/F	ØP	H	WT
15 mm	87	9.5	53	1.0 kg
20 mm	92	12.7	56	1.3 kg
25 mm	106	17.5	66	2.2 kg
32 mm	127	23.8	86	4.9 kg
40 mm	127	28.6	86	4.7 kg
50 mm	142	36.5	104	8.2 kg

CLASS-1500#				
SIZES	F/F	ØP	H	WT
15 mm	92	8.0	56	1.5 kg
20 mm	106	9.0	66	2.5 kg
25 mm	127	14.0	86	5.6 kg
32 mm	142	20.0	104	5.4 kg
40 mm	142	25.0	104	9.4 kg

CLASS-2500#				
SIZES	F/F	ØP	H	WT
15 mm	106	7.0	66	2.9 kg
20 mm	127	12.5	86	6.4 kg
25 mm	142	15.5	104	10.8 kg

CHECK VALVES - FORGED FLANGED END ASME CLASS - 150, 300 & 600

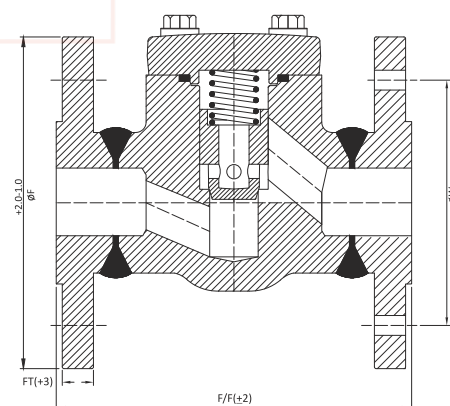
Standards : ISO 15761

Range : 1/2" to 2"

(15mm to 50mm)

Class 150, 300 & 600

Materials : A105, F304L, F316L, LF2



CLASS-150#					
SIZES	F/F	ØF	FT	ØW	WT
15 mm	108	90	9.6	60.3	2.0 kg
20 mm	117	100	11.2	69.9	2.9 kg
25 mm	127	110	12.7	79.4	4.2 kg
32 mm	140	115	14.3	88.9	7.3 kg
40 mm	165	125	15.9	98.4	7.9 kg
50 mm	203	150	17.5	120.7	13.4 kg

CLASS-300#					
SIZES	F/F	ØF	FT	ØW	WT
15 mm	152	95	12.7	66.7	2.8 kg
20 mm	178	115	14.3	82.6	4.1 kg
25 mm	203	125	15.9	88.9	6.0 kg
32 mm	216	135	17.5	98.4	9.3 kg
40 mm	229	155	19.1	114.3	10.9 kg
50 mm	267	165	20.7	127	16.0 kg

CLASS-600#					
SIZES	F/F	ØF	FT	ØW	WT
15 mm	165	95	14.3	66.7	3.0 kg
20 mm	190	115	15.9	82.6	4.2 kg
25 mm	216	125	17.5	88.9	6.4 kg
32 mm	229	135	20.7	98.4	10.1 kg
40 mm	241	155	22.3	114.3	11.9 kg
50 mm	292	165	25.4	127	18.0 kg

HYDRAULIC TEST PRESSURE		
ANSI B 16.34/ANSI B 16.5/IBR		
CLASS	BODY	SEAT
150 #	32 kg/CM ²	22 kg/CM ²
300 #	79 kg/CM ²	57 kg/CM ²
600 #	156 kg/CM ²	115 kg/CM ²
800 #	209 kg/CM ²	153 kg/CM ²
900 #	235 kg/CM ²	172 kg/CM ²
1500 #	392 kg/CM ²	287 kg/CM ²
2500 #	652 kg/CM ²	477 kg/CM ²
PNEUMATIC TEST PRESS. 7 kg/CM ²		

At RAJ ENGINEERS, our goal is to be a leading global provider of high-quality industrial valves under the KVF brand, delivering reliable and efficient flow control solutions for diverse industries. We aim to achieve this through continuous innovation, precision engineering, and a customer-centric approach*.

Our Mission:

- ✓ Uncompromising Quality – To manufacture industrial valves that meet the highest international standards, ensuring durability, efficiency, and safety.
- ✓ Customer Satisfaction – To provide customized solutions, timely deliveries, and exceptional service that exceed customer expectations.
- ✓ Technological Excellence – To invest in cutting-edge technology and advanced manufacturing processes to enhance product performance and reliability.
- ✓ Sustainable Growth – To promote environmentally responsible practices and contribute to sustainable industrial solutions.
- ✓ Global Expansion – To strengthen our presence in domestic and international markets, becoming a preferred choice for high-performance industrial valves. At RAJ ENGINEERS, we are committed to excellence, integrity, and innovation, ensuring that every product under the KVF brand upholds our reputation for quality and reliability.

105, Rajdeep Industrial Estate,
Nr. Bibi Talav, Vatva,
Ahmedabad-382440. (Guj.) INDIA.

kvfvalve2004@gmail.com

www.kvfvalve.com



GeM
Government
e Marketplace